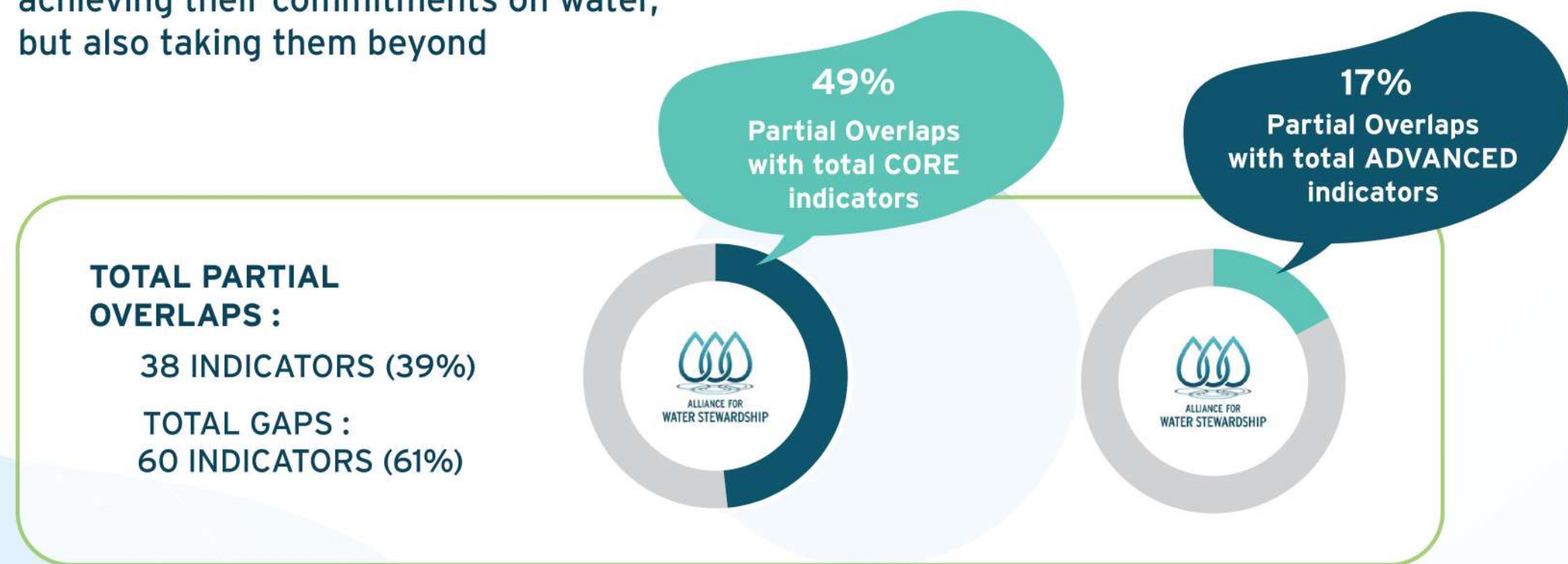


GPSNR x AWS

The overview of overlaps and gaps, as well as the recommendations could support GPSNR members achieving their commitments on water, but also taking them beyond



AIDAN MOCK
Impacts and Assurance Manager,
Global Platform
for Sustainable Natural Rubber (GPSNR)

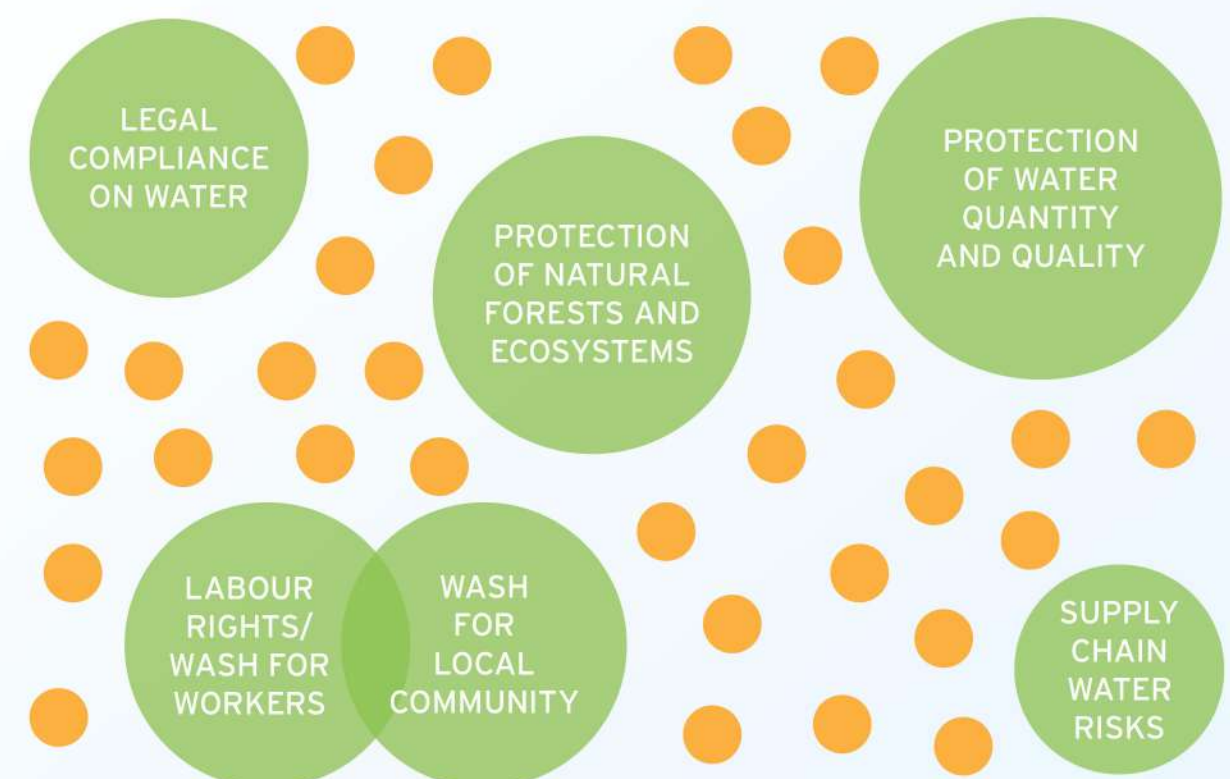


GPSNR Implementation Guidance is designed to support GPSNR members in implementing their commitment under the GPSNR Policy Framework. The Reporting Requirements is a guidance for members on what to report on in relations to the implementation of their commitment




The initial Classification as Model in Group Decision Support System for Decision Making work also highlighted 6 priority topics in which AWS Standard could support GPSNR members in meeting their obligation under the policy framework.

These topics cover all GPSNR components related to water, including those that initially "hidden"



The report provides insights on the drivers and co-benefits from water stewardship implementation as part of sustainable natural rubber production

The creation of this visual art is possible thanks to a grant from the ISEAL Innovations Fund, which is supported by:



Schweizerische Eidgenossenschaft
Confédération suisse
Confederazione Svizzera
Confederaziun svizra

Swiss Confederation

Federal Department of Economic Affairs,
Education and Research EAER
State Secretariat for Economic Affairs SECO

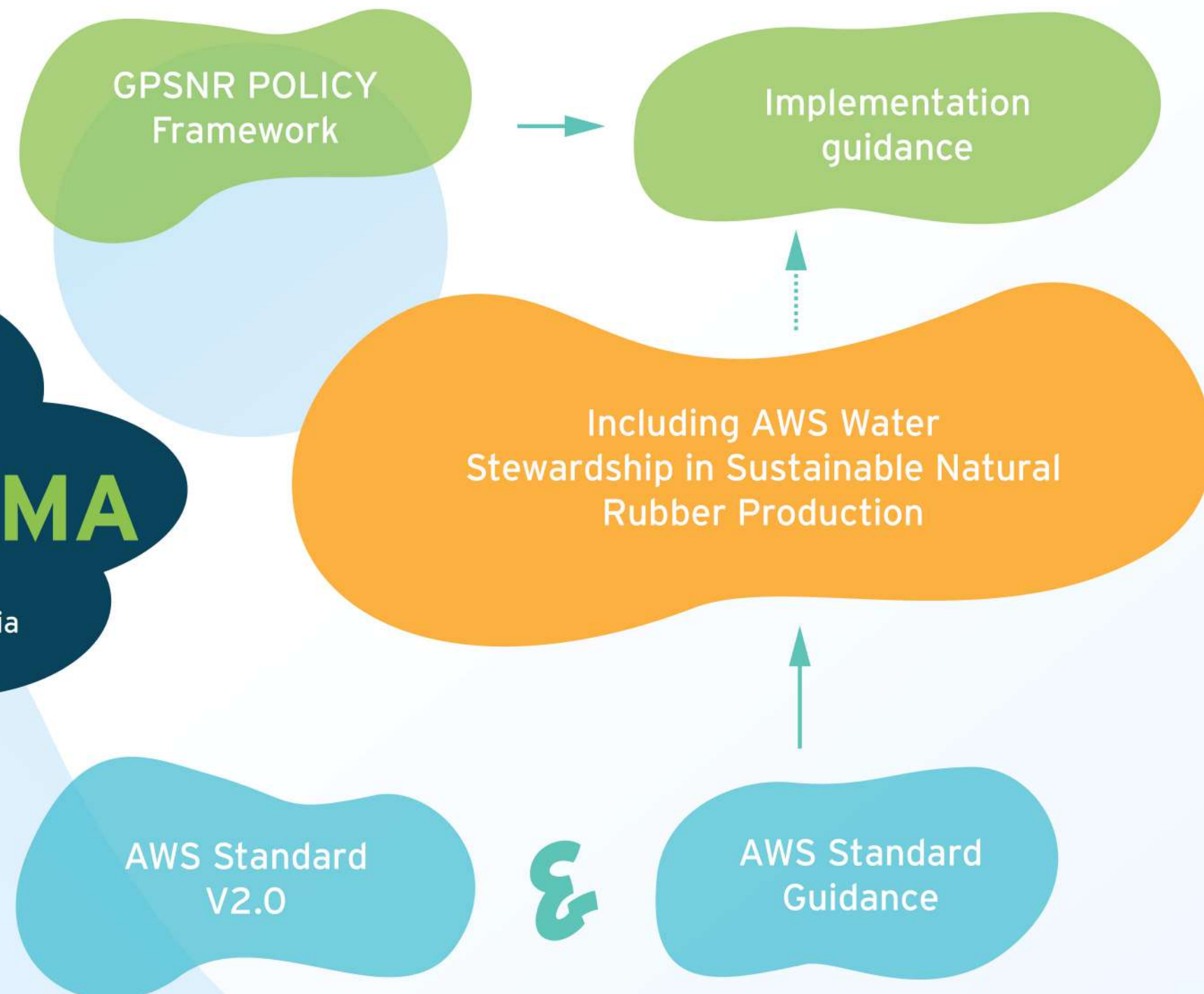
This report introduces company members to AWS Standard and the potential co-benefits in the context of natural rubber supply chain

It provides a high-level recommendation to start the trajectory towards AWS Standard implementation in the natural rubber sector



FANY WEDAHUDITAMA

Executive Director,
Yayasan AWS Indonesia



IMPORTANT

Why do we have to talk about natural rubber sector performance on water? how we manage our water ?

- We are exposed to water risks both from within our site boundaries and beyond, from the catchment where we are operating.
- Good water stewardship principles & AWS Standard can help to bring evidence of robust water risk and impact migration effort in SUSTAINABLE and RESILIENCE manner.
- Financial institutions have started to look at water-related risks to ensure their investment is safe.



WE SHARE THIS WATER RELATED CHALLENGES TOGETHER

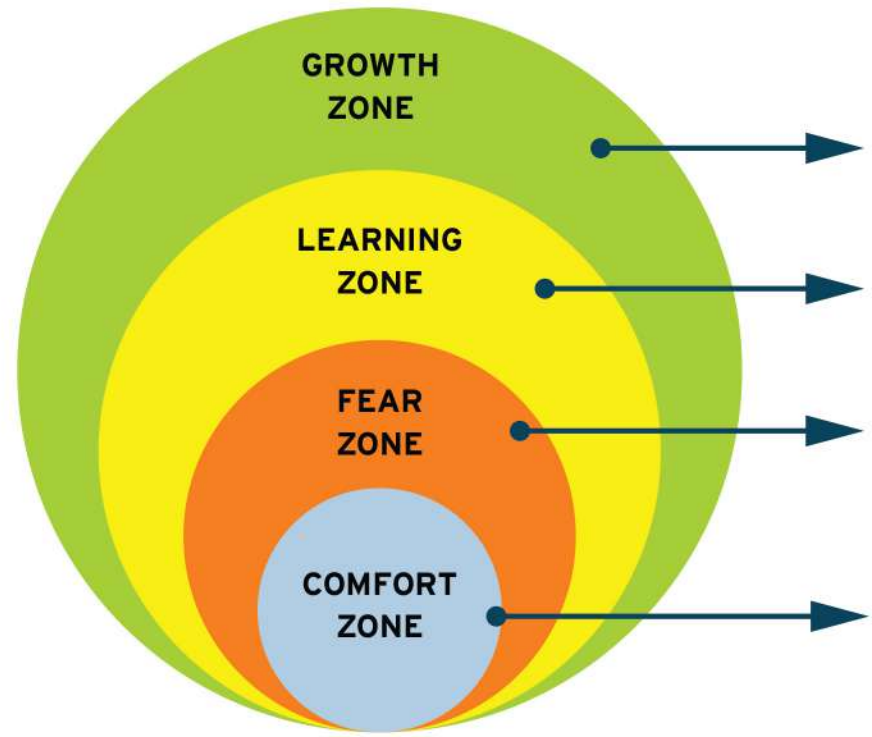


COLLABORATIVE ACTIONS FROM ALL STAKEHOLDER IN THE CATCHMENT



DIDIER PEREZ

Founder & CEO
OPT Pran Indo Permata Abadi
(P.I.P.A.)



- 4 We understand to anticipate, mitigate, control, and decide
- 3 It's time for reaction and innovation
- 2 We identify the problems but don't have any solution
- 1 We dont really expect water will significantly disturb our action

INDONESIA'S NATURAL RUBBER SECTOR TODAY IS ON COMFORT ZONE, BUT THERE IS A BIG RISK TO ENTER THE FEAR ZONE DUE TO EXTERNAL PARAMETERS.



WATER USAGE

- BIG CONSUMPTION
- POOR WATER USAGE MONITORING

Indonesia natural water sector FULLY DEPENDS on international market



THE GAP WITHIN COMFORT ZONE TO FEAR ZONE IS NARROW



Neglecting water risk today has become future risk to business sustainability



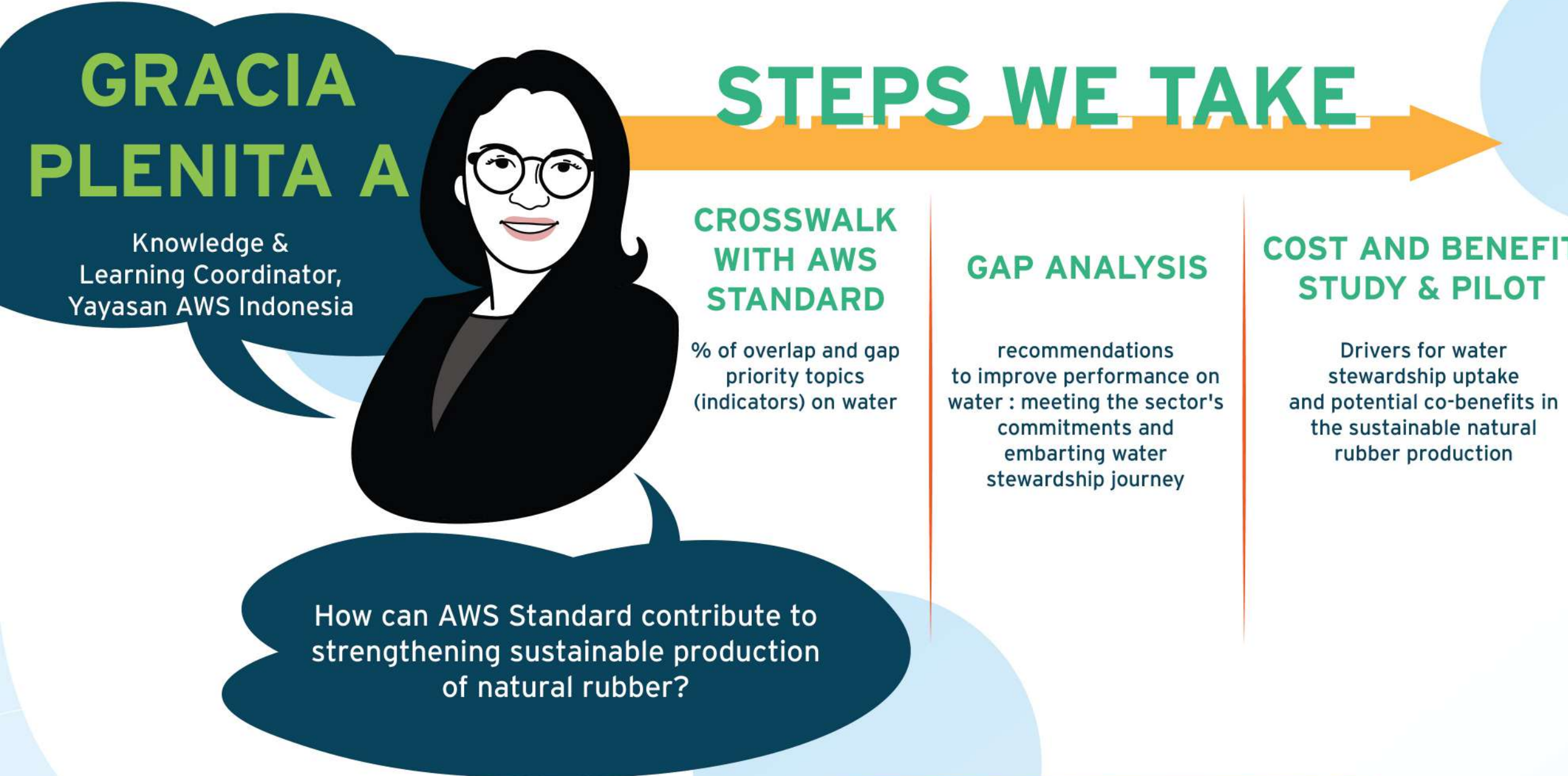
EXPECTED BENEFIT OF AN IMPROVED WATER STEWARDSHIP

1. Anticipate regulation changes and impact on operations
2. Inclusion of farmers and villagers into safe WASH program
3. Improved climate change adaptation efforts, leading to more resilient operations
Cost Benefit Analysis (CBA) for improved water stewardship practices in natural rubber processing facilities
- 4.

- value creation is not only financial
- by getting out comfort zone
- by exposing risks
- by measuring, monitoring, communicating

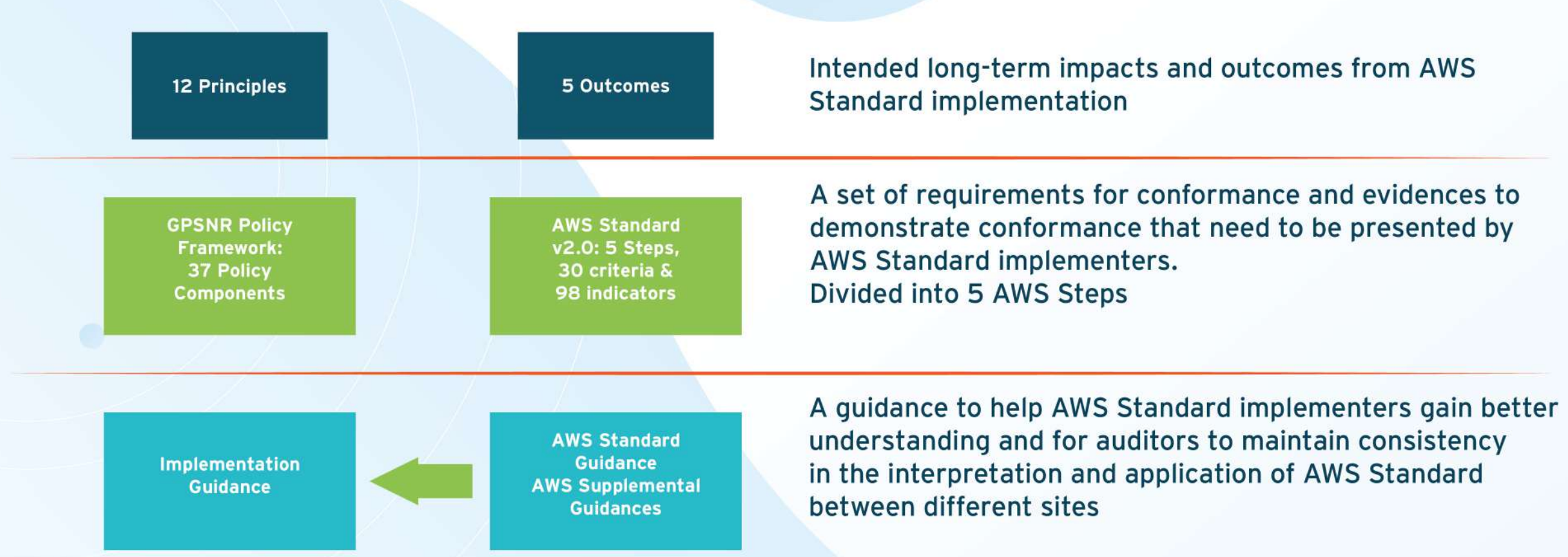
"we can stay on comfort zone but we can behave as winner by anticipating and mitigating future water crisis"

THE OVERLAPS : AREAS FOR MUTUAL STRENGTHENING



- Maintain legal compliance on water
 - Participation in catchment actions with key stakeholders
 - Disclosure of site's performance on water
- Achieving and maintaining water use efficiency
 - GAP: Prevention of erosion and land subsidence
- Protection of water quality through preventing contamination
- No deforestation and peatland development in the supply chain
 - Supporting long-term protection of HCV, forests, and other important ecosystems
- Respecting water rights of local and indigenous communities
 - Supporting access to safe WASH facilities for workers and local communities

AMS STANDARD & GPSNR POLICY FRAMEWORK



5 PRIORITY ON WATER STEWARDSHIP IN GPSNR POLICY FRAMEWORK



THE RECOMMENDATIONS

OVERARCHING ACTIONS

the need to better understand shared challenges & potential co-benefits at catchment level from good water stewardship implementation



the need to have a robust and comprehensive water management plan

TOPIC SPECIFIC ACTION

Low Hanging Fruits embarking on AWS water stewardship trajectory. As part of meeting the commitments outlined in the GPSNR Policy Framework



OVER-ARCHING ACTION 1

INTRODUCING THE CONCEPT OF PHYSICAL SCOPE OF ACTION

Physical scope is the land area relevant to the site's water stewardship action and engagement

Typically centred on the site & extends beyond the area, to include :

- ✓ The site's water sources
- ✓ Water service provider & its ultimate water source
- ✓ Discharge points, waste water service Provider and ultimate receiving waterbody
- ✓ Catchment that the site affect & is reliant upon water: surfaced water- based, ground water- based or a combination of both

OVER-ARCHING ACTION 2

The water stewardship plan should address risks, shared challenges and opportunities on water.

RISK	RISK	RISK
To the site & it's water supply	From the site to other water user & natural environment	Related to shared water challenges

The plan should mention 5 components of :



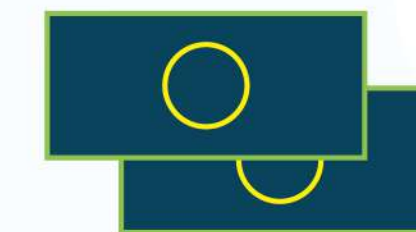
Target



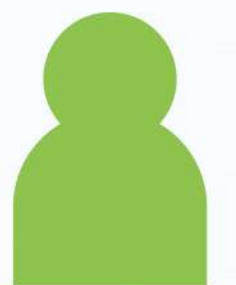
Measurement to monitoring method action



Timeframe



Budget



Responsible Person

TOPIC- SPECIFIC ACTION 1

LEGAL COMPLIANCE ON WATER

1. Identify all applicable water-related legal and regulatory requirements
2. Develop and execute the system to maintain compliance
3. Implement and document process to verify full legal and regulatory compliance
4. Include measures to respect and protect the water rights of others

TOPIC- SPECIFIC ACTION 2

PROTECTION OF NATURAL FORESTS AND ECOSYSTEMS

1. Identify and mapped all on-site important Water-Related Areas
2. Identify, and where appropriate mapped, the relevant catchment-level Important Water-Related Areas
3. Include actions to address or mitigate risks
4. Implement and record performance on actions

TOPIC- SPECIFIC ACTION 3

PROTECTION OF WATER QUANTITY AND QUALITY

1. Maintain and regularly update water-related incident response plans
2. Identify, mapped and develop (quantify) the sites water balance
3. Regularly monitor and record the required (and relevant) water quality parameters
4. Identify and mapped all of the site's potential sources of pollution
5. Include actions to address or mitigate risks
6. Implement and record performance

TOPIC- SPECIFIC ACTION 4

LABOUR RIGHTS / WASH FOR WORKERS

1. Identify the number and state of safe WASH facilities
2. Include actions to address or mitigate risks
3. Implement and record performance (quality and quantity)

TOPIC- SPECIFIC ACTION 4

WASH FOR LOCAL COMMUNITIES

1. identify the adequacy of available WASH services within the catchment
2. Include actions to address or mitigate risks
3. Respect and protect other's right to safe water and sanitation of communities
4. Implement remedial actions to address violation of Other's right to safe WASH
5. Implement and record performance on actions

TOPIC- SPECIFIC ACTION 5

Supply chain water risks (AWS indicator 1.4.1, 1.6.1, 2.3.2, 3.7.1, 3.7.2)

1. Identify the embedded water use of primary inputs, including quantity, quality, and level of water risk within the site's catchment.
Many tools are available for rapid assessment of catchment water risk, for example WRI Aqueduct Water Risk Atlas and WWF Water Risk Filter

KEEP A TABULATED INFORMATION ON THE SITE'S INDIRECT WATER AS PRESENTED BELOW.

TYPE OF COMPANY MEMBERS	KEY PRIMARY INPUT	ESTIMATED ORIGIN	ANNUAL WATER CONSUMPTION	CATCHMENT WATER RISKS AND CONCERNS	PRIORITY FOR MITIGATION ACTION
Processors	Eg. raw natural rubber or latex	(country/region /catchment)	(kg, t, L, ML, or unit as appropriate)	Eg. Flooding, scarcity, regulatory, pollution	High, medium, low

2. Identify and prioritize the shared water challenges
3. Identify the existing catchment initiatives
4. Include actions to address or mitigate risks
5. Implement and record performance
6. Document and report on engagement with suppliers on embedded water risk